

CNT 4603: System Administration Fall 2013

Installing/Configuring VMware Player

Instructor : Dr. Mark Llewellyn
markl@cs.ucf.edu
HEC 236, 4078-823-2790
<http://www.cs.ucf.edu/courses/cnt4603/fall2013>

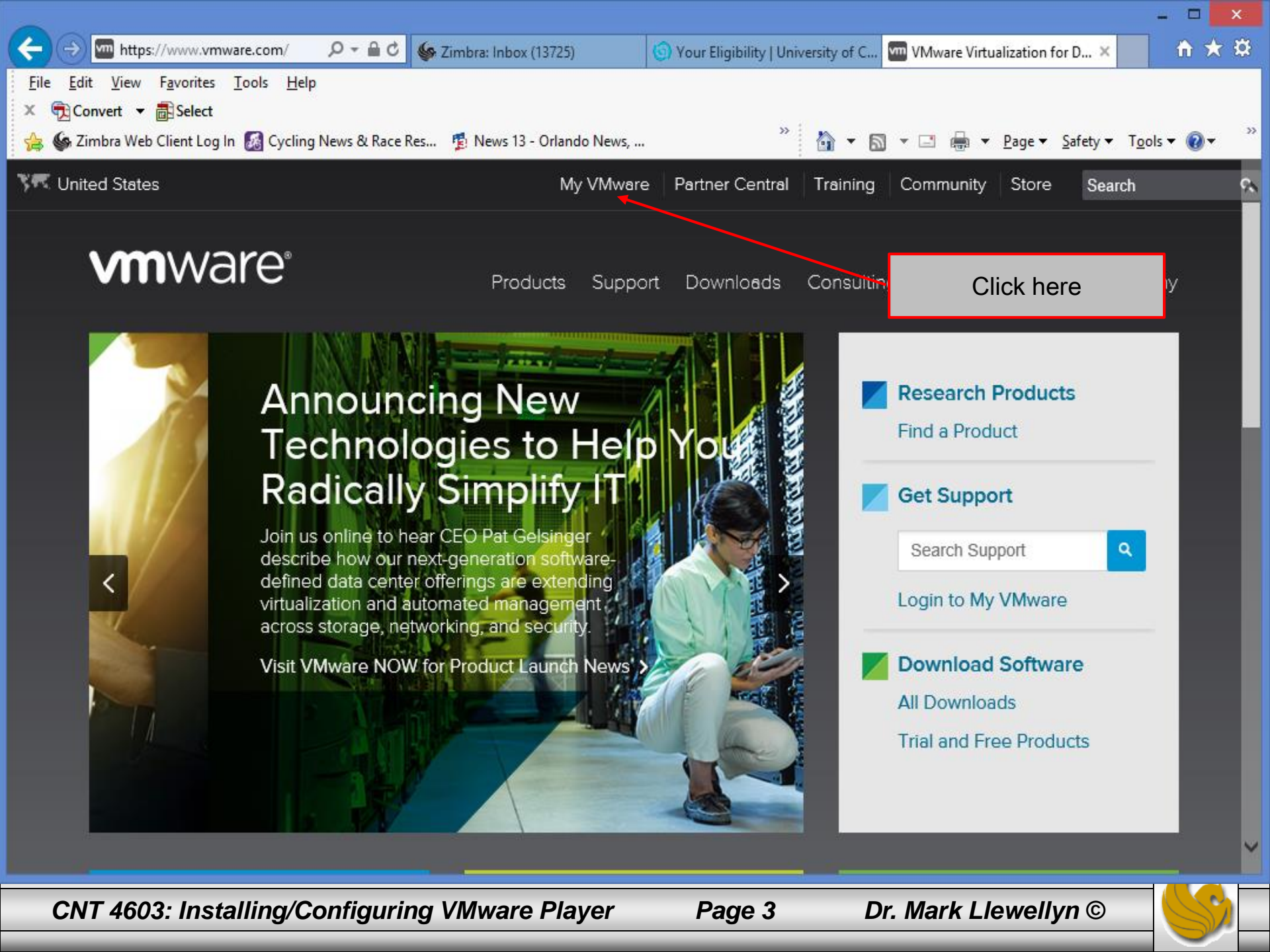
Department of Electrical Engineering and Computer Science
Computer Science Division
University of Central Florida



Installing and Configuring VMware Player

- As we discussed earlier in the course, virtualization software allows you to turn your PC into a virtual system on which you can run other operating systems – without having to alter the current OS already running on your system.
- This set of notes will step you through the process of installing VMware Player on your machine and then installing the Windows Server 2012 as an OS within the virtual environment.
- You can get VMware Player at: <http://www.vmware.com/products/player/> (see next page).
Current version is 6.0.0.





vmware®

My VMware

Partner Central

Training

Community

Store

Search

Products

Support

Downloads

Consulting

Click here

Announcing New Technologies to Help You Radically Simplify IT

Join us online to hear CEO Pat Gelsinger describe how our next-generation software-defined data center offerings are extending virtualization and automated management across storage, networking, and security.

Visit VMware NOW for Product Launch News >

Research Products

Find a Product

Get Support

Search Support



Login to My VMware

Download Software

All Downloads

Trial and Free Products



Browser tabs: Zimbra: Inbox (13725), Your Eligibility | University of C..., Login - My VMware

Address bar: https://my.vmware.com/web/vr

Navigation: File, Edit, View, Favorites, Tools, Help

Page Header: United States, My VMware, Partner Central, Training, Community, Store, Search

Main Navigation: VMware, Products, Support, Downloads, Consulting, Partner Programs

Secondary Navigation: My VMware, Partner Programs, Training

Section: My VMware™

Text: New enhancements available!

- **Subscription Services** - View cloud service offerings, manage users, access billing statements, and submit add-on requests for additional capacity. [Learn More](#)
- **Download** - Easier to identify products and components, switch across versions, direct access to Custom ISOs, manual download default, context-specific links, and resources. [Learn More](#)
- **Licensed Products** - Improved browsing, searching, visibility, and quicker access to your software products. [Learn More](#)

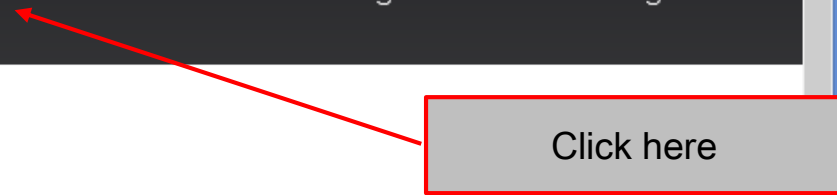
Log In / Register

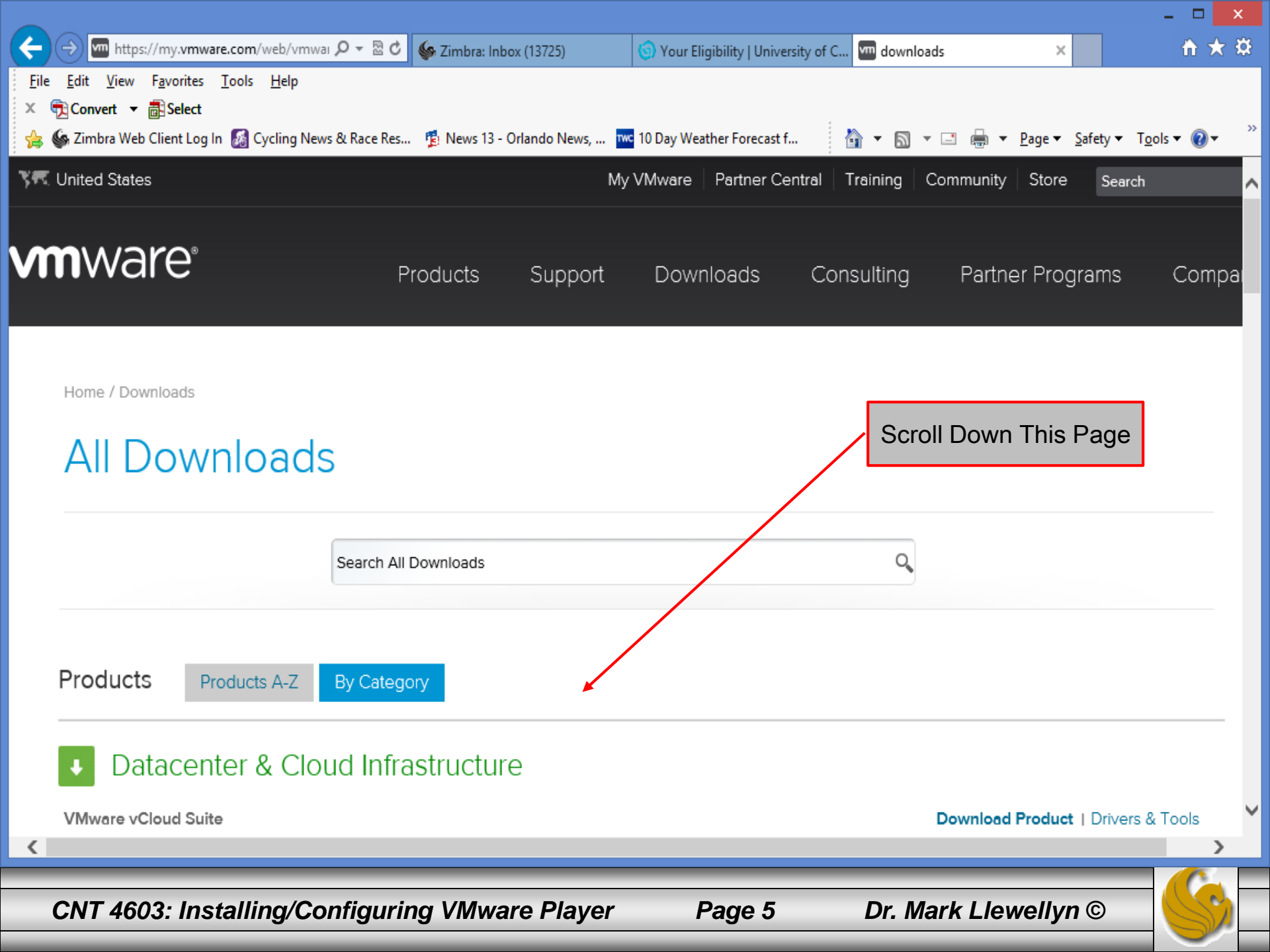
Email address or customer number:

Password:

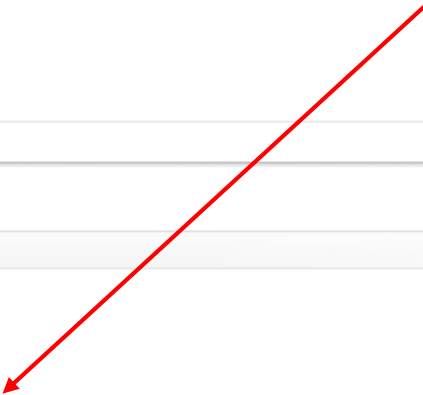
[Forgot your password?](#)

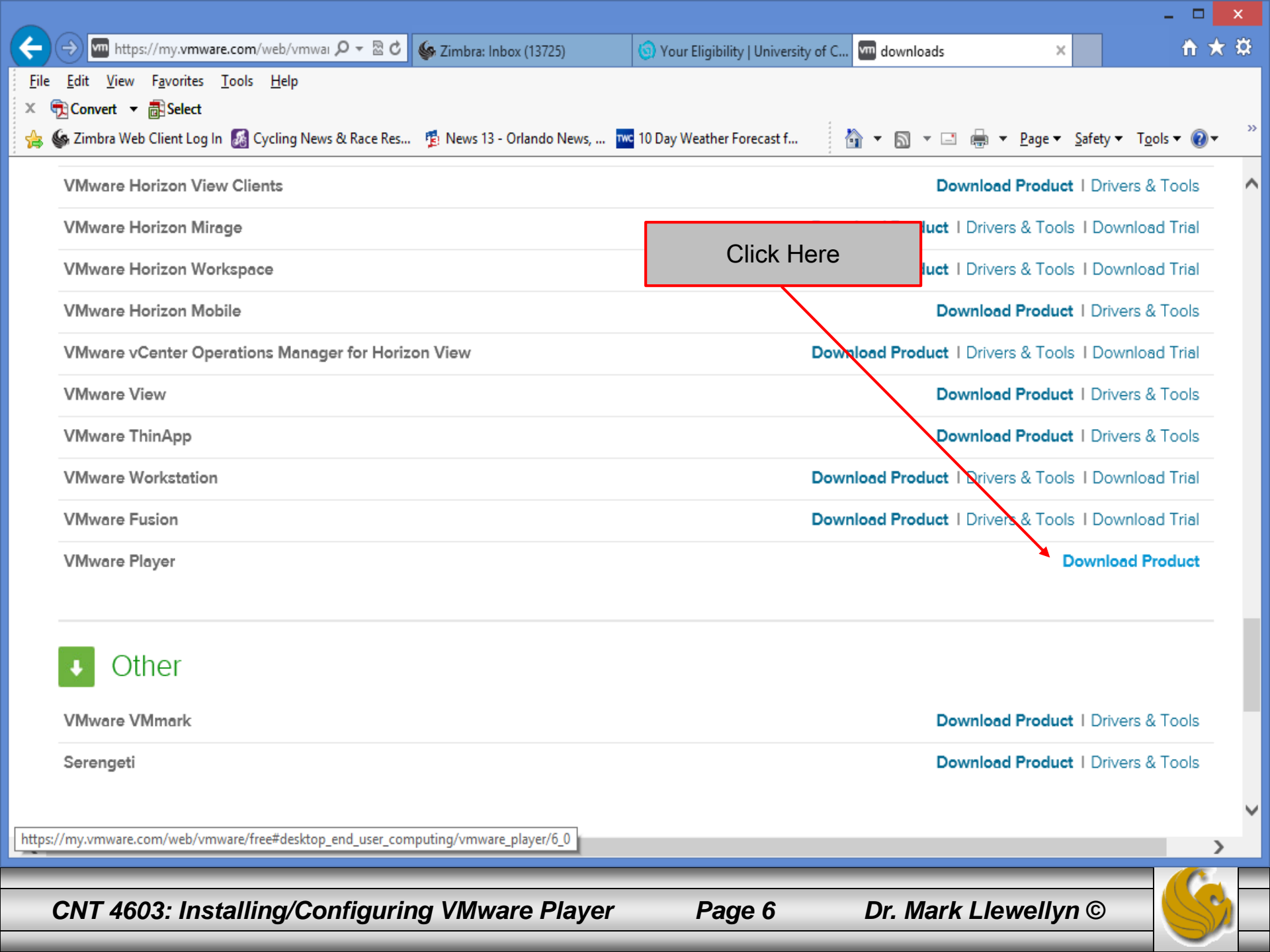
Remember me



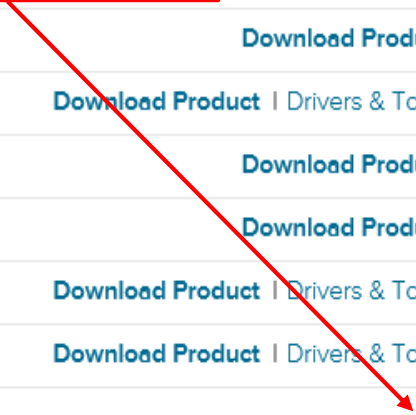


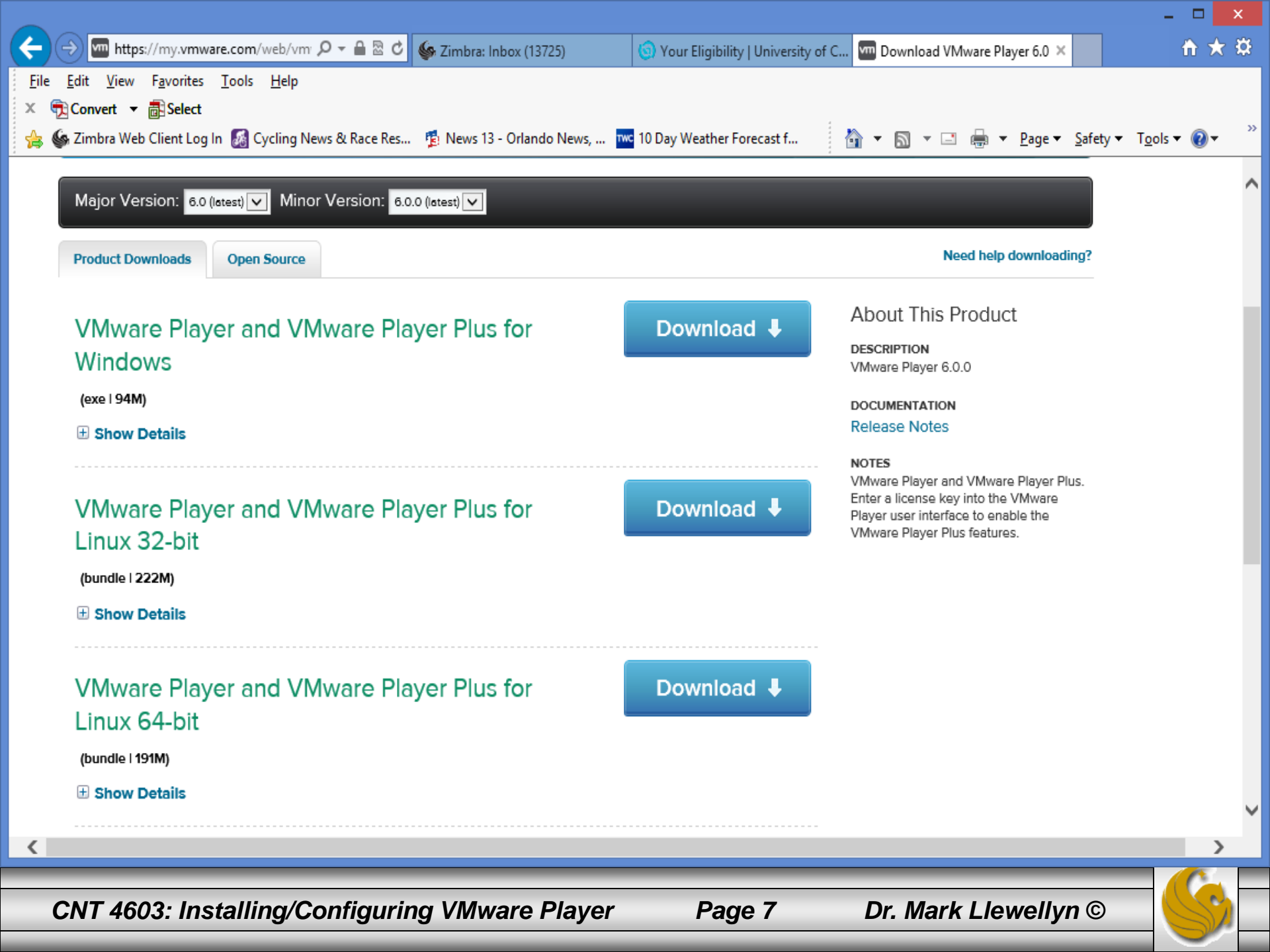
Scroll Down This Page





Click Here





Major Version: 6.0 (latest) Minor Version: 6.0.0 (latest)

Product Downloads

Open Source

[Need help downloading?](#)

VMware Player and VMware Player Plus for Windows

(exe | 94M)

[+ Show Details](#)

Download ↓

About This Product

DESCRIPTION

VMware Player 6.0.0

DOCUMENTATION

[Release Notes](#)

NOTES

VMware Player and VMware Player Plus. Enter a license key into the VMware Player user interface to enable the VMware Player Plus features.

VMware Player and VMware Player Plus for Linux 32-bit

(bundle | 222M)

[+ Show Details](#)

Download ↓

VMware Player and VMware Player Plus for Linux 64-bit

(bundle | 191M)

[+ Show Details](#)

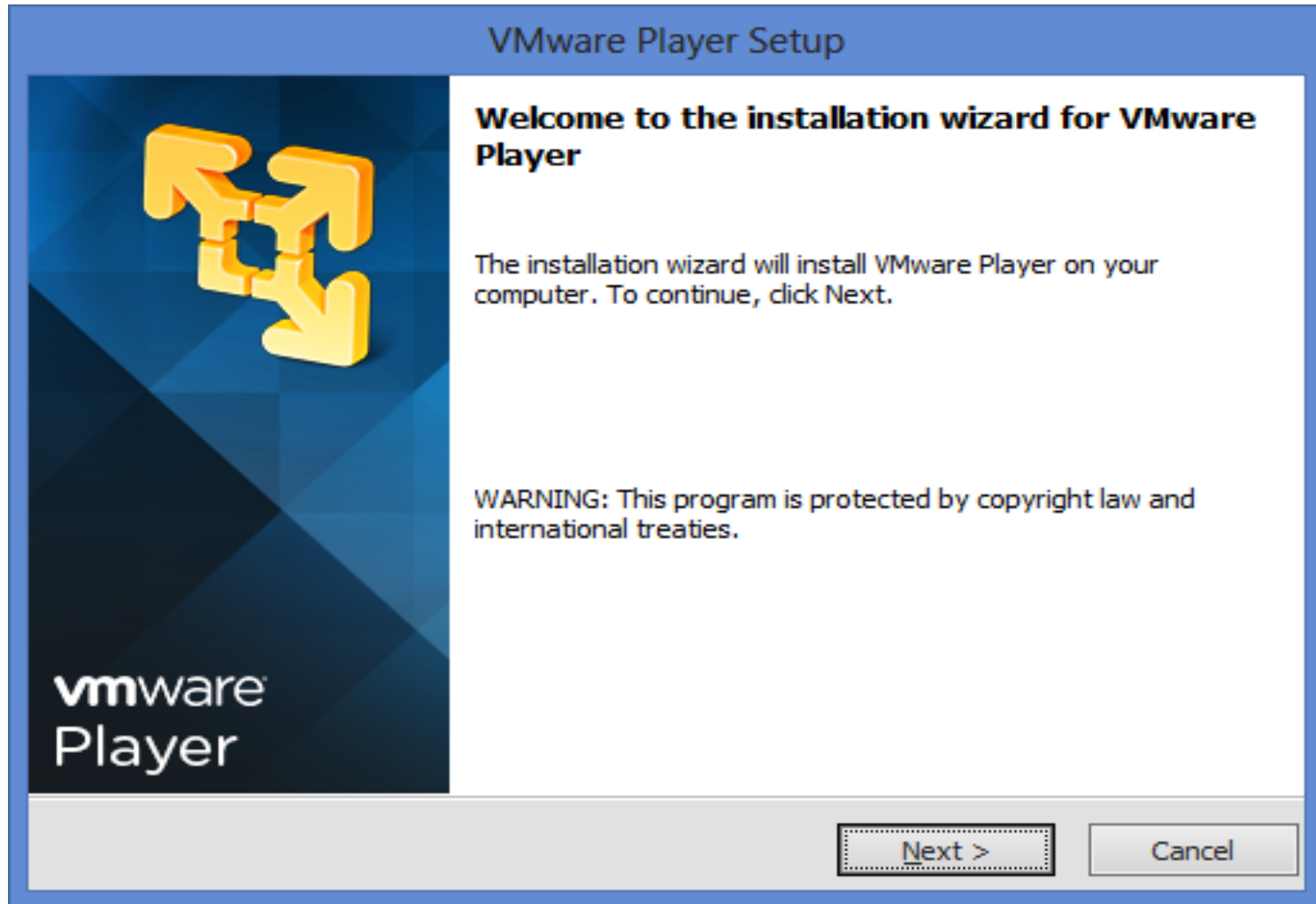
Download ↓



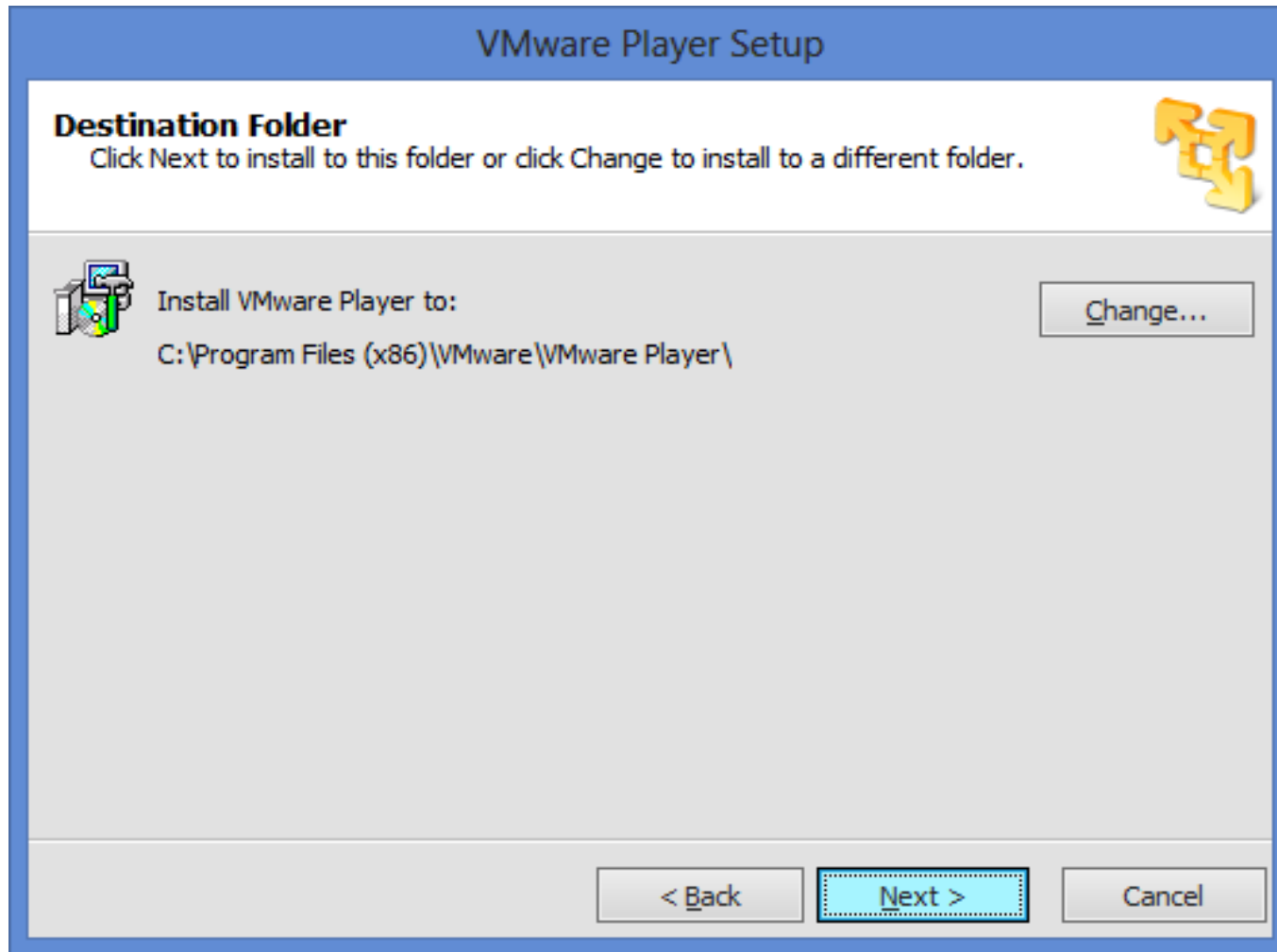
Installing and Configuring VMware Player



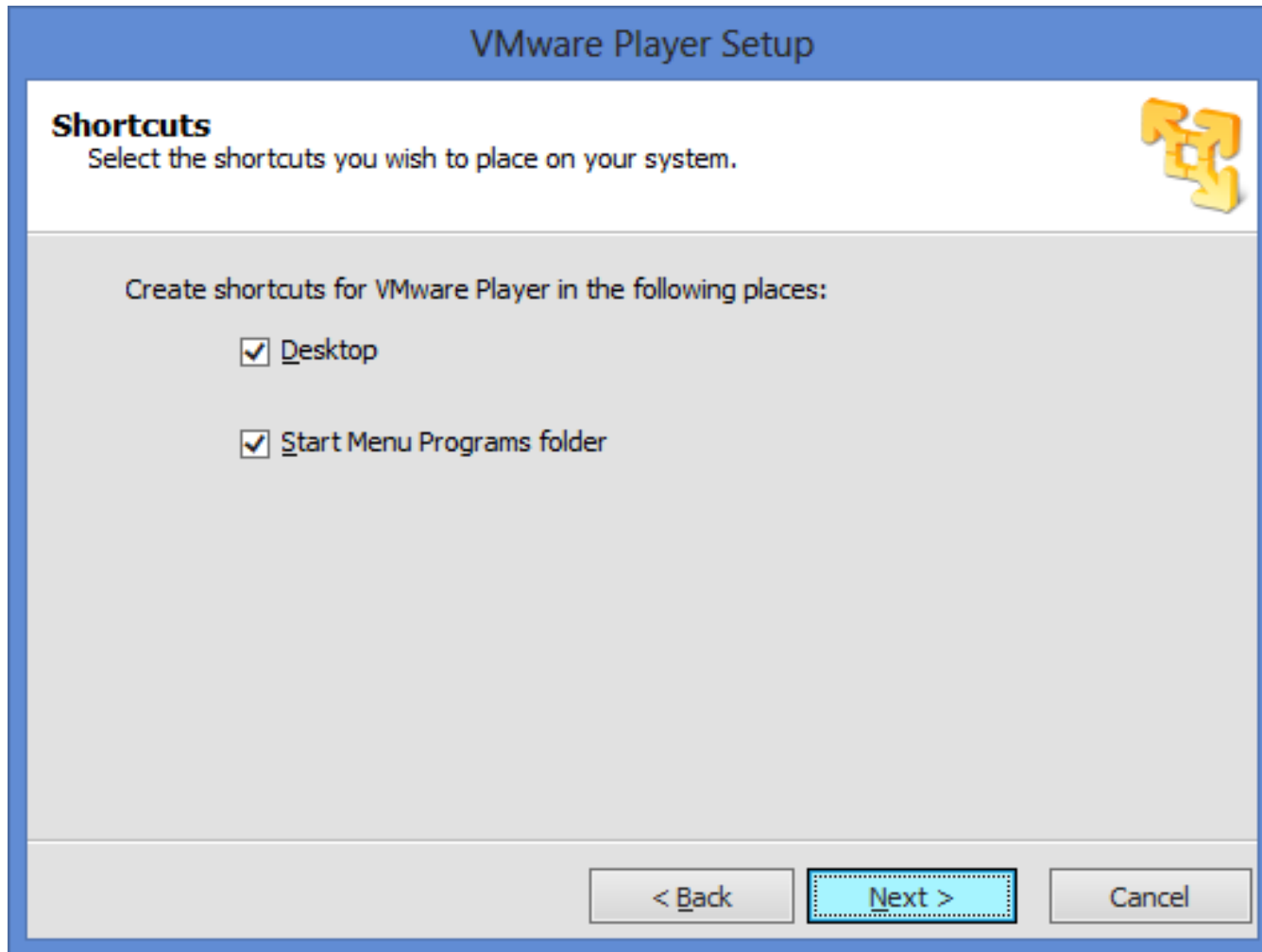
Installing and Configuring VMware Player



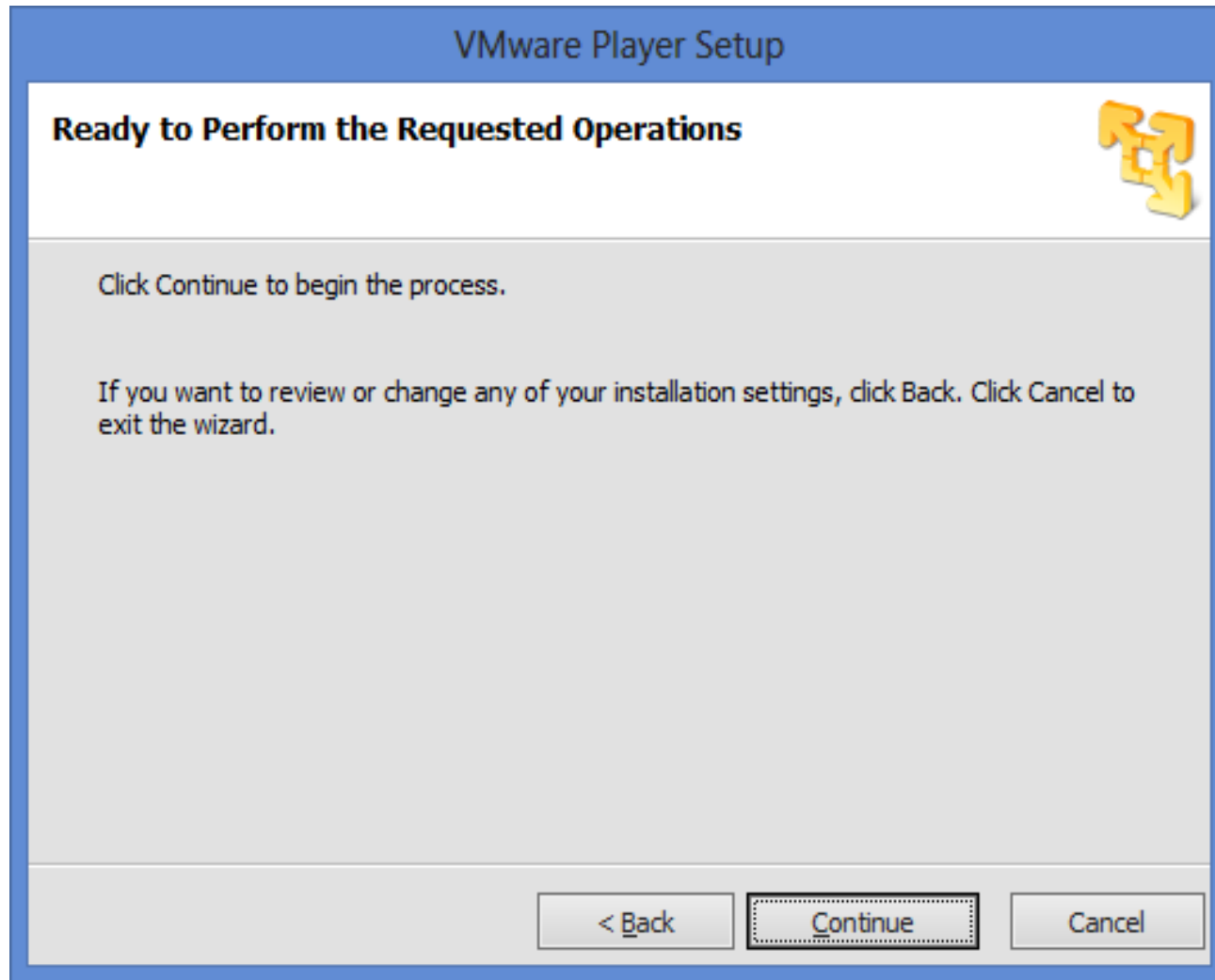
Installing and Configuring VMware Player



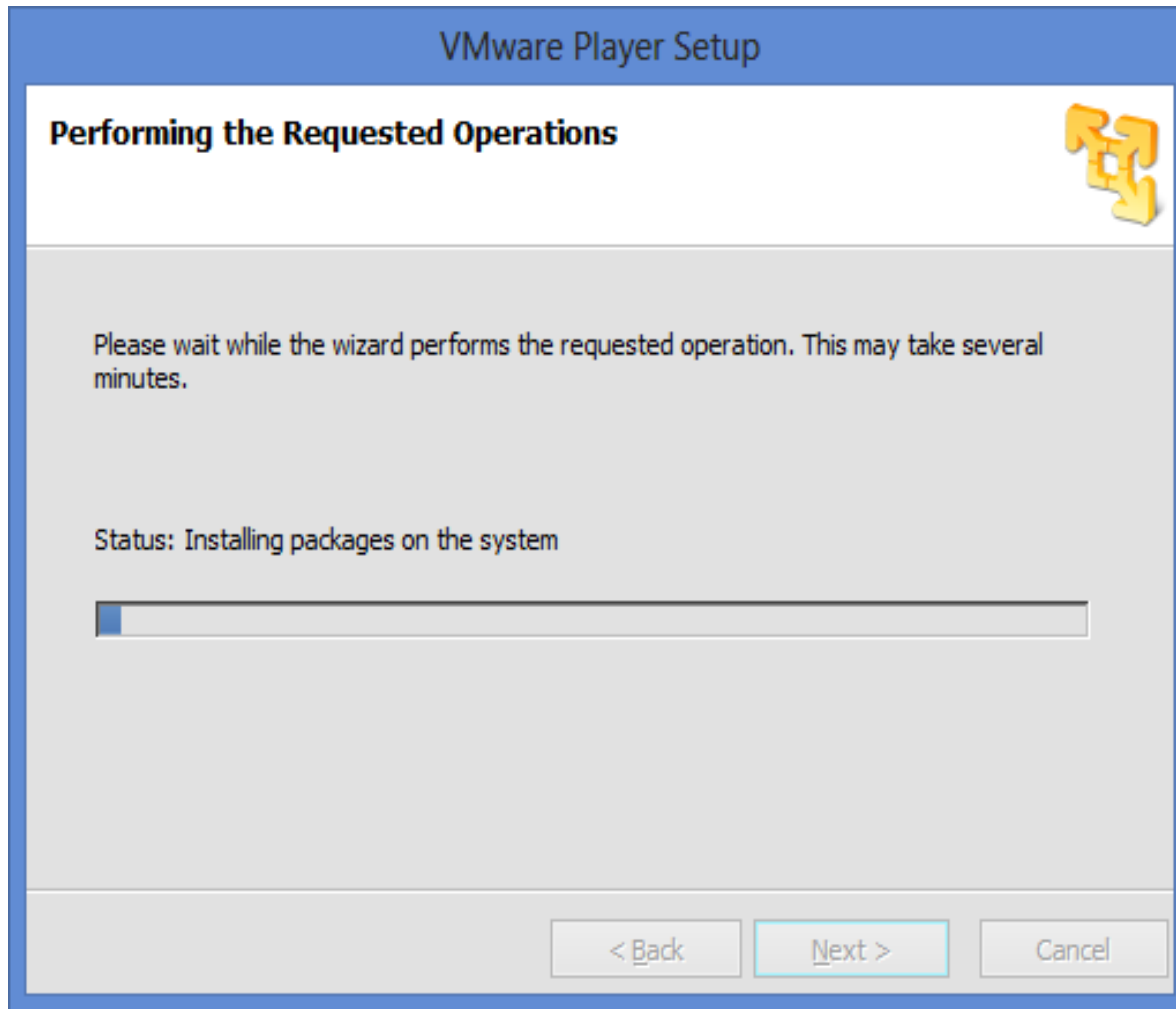
Installing and Configuring VMware Player



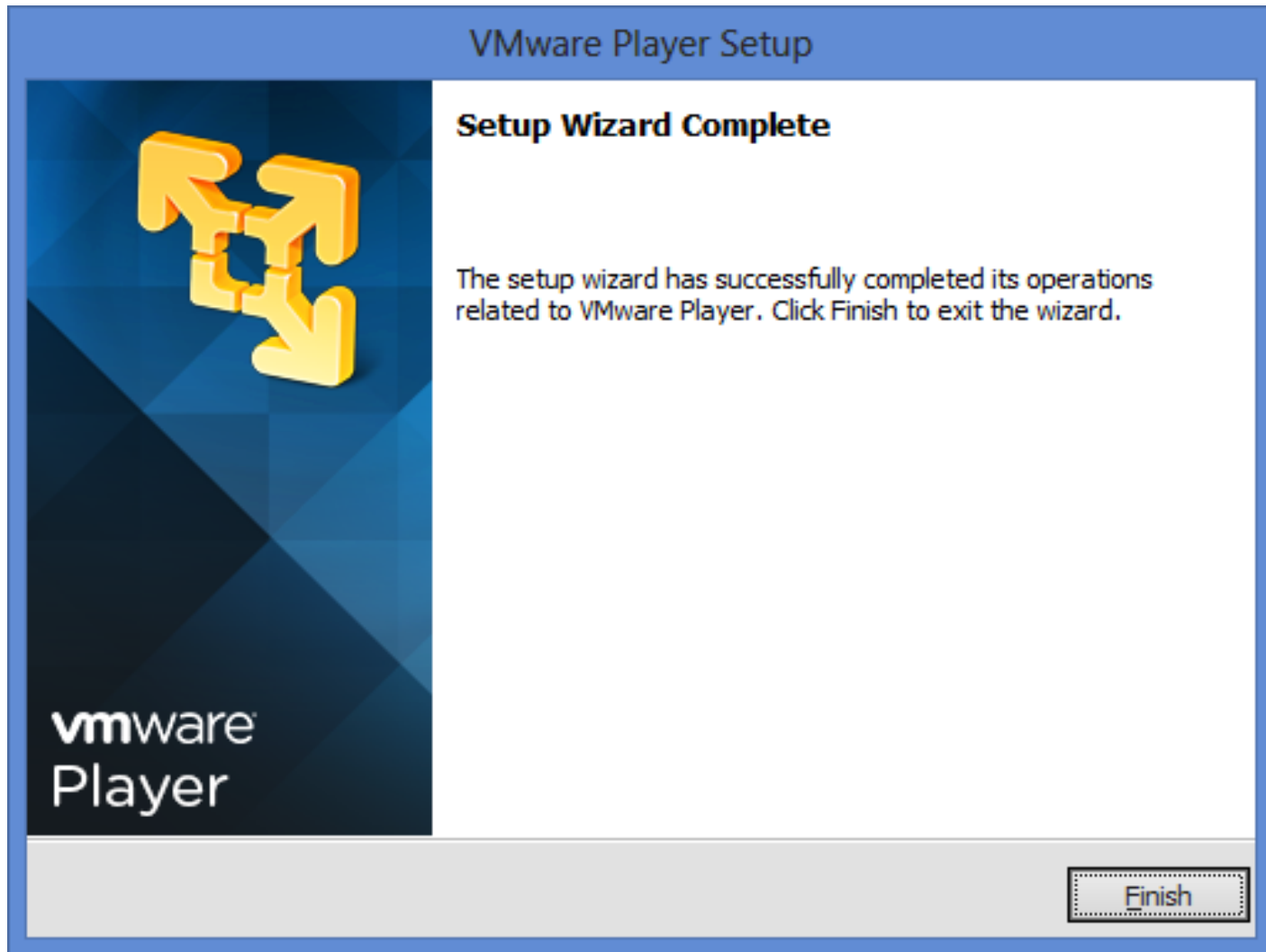
Installing and Configuring VMware Player



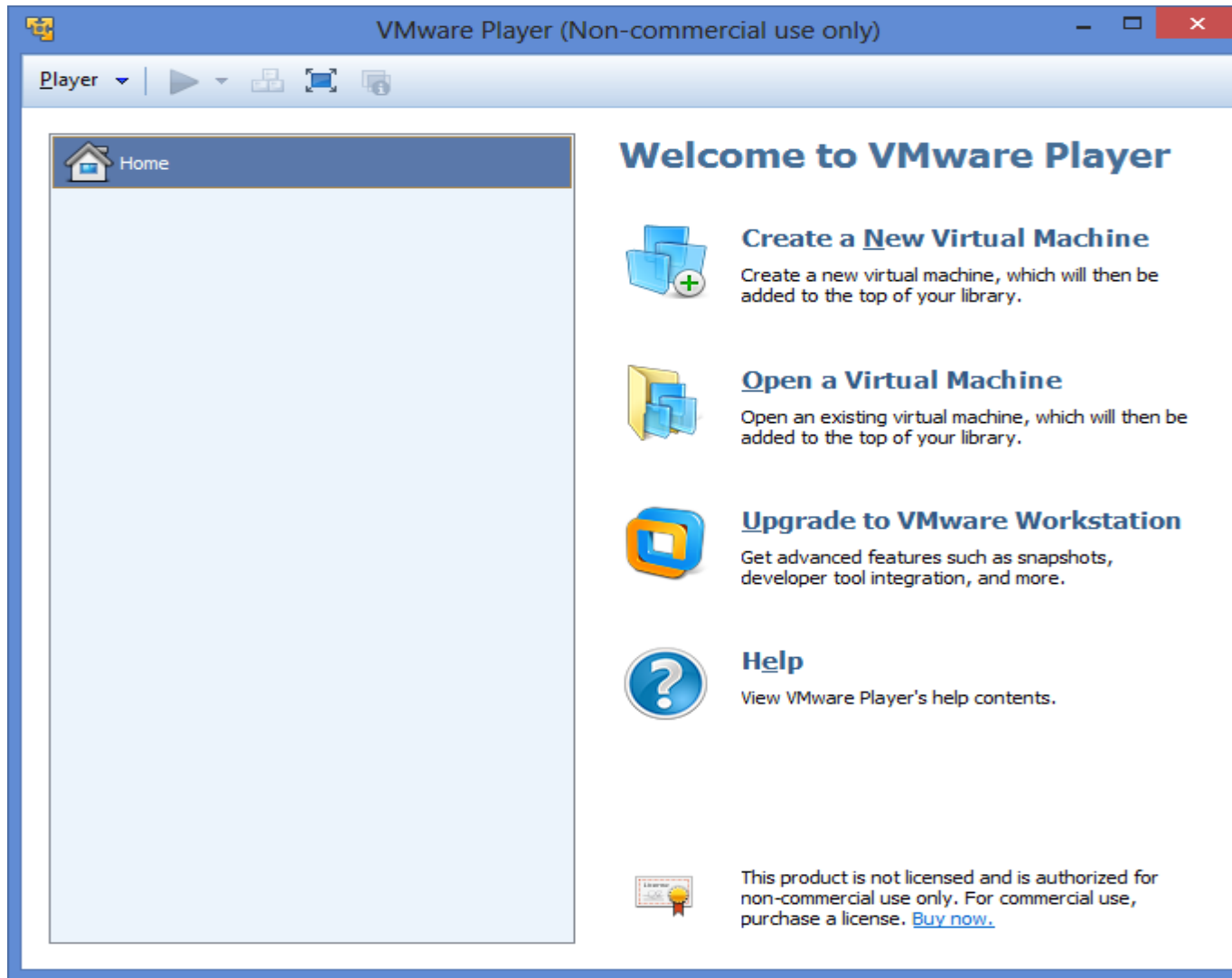
Installing and Configuring VMware Player



Installing and Configuring VMware Player



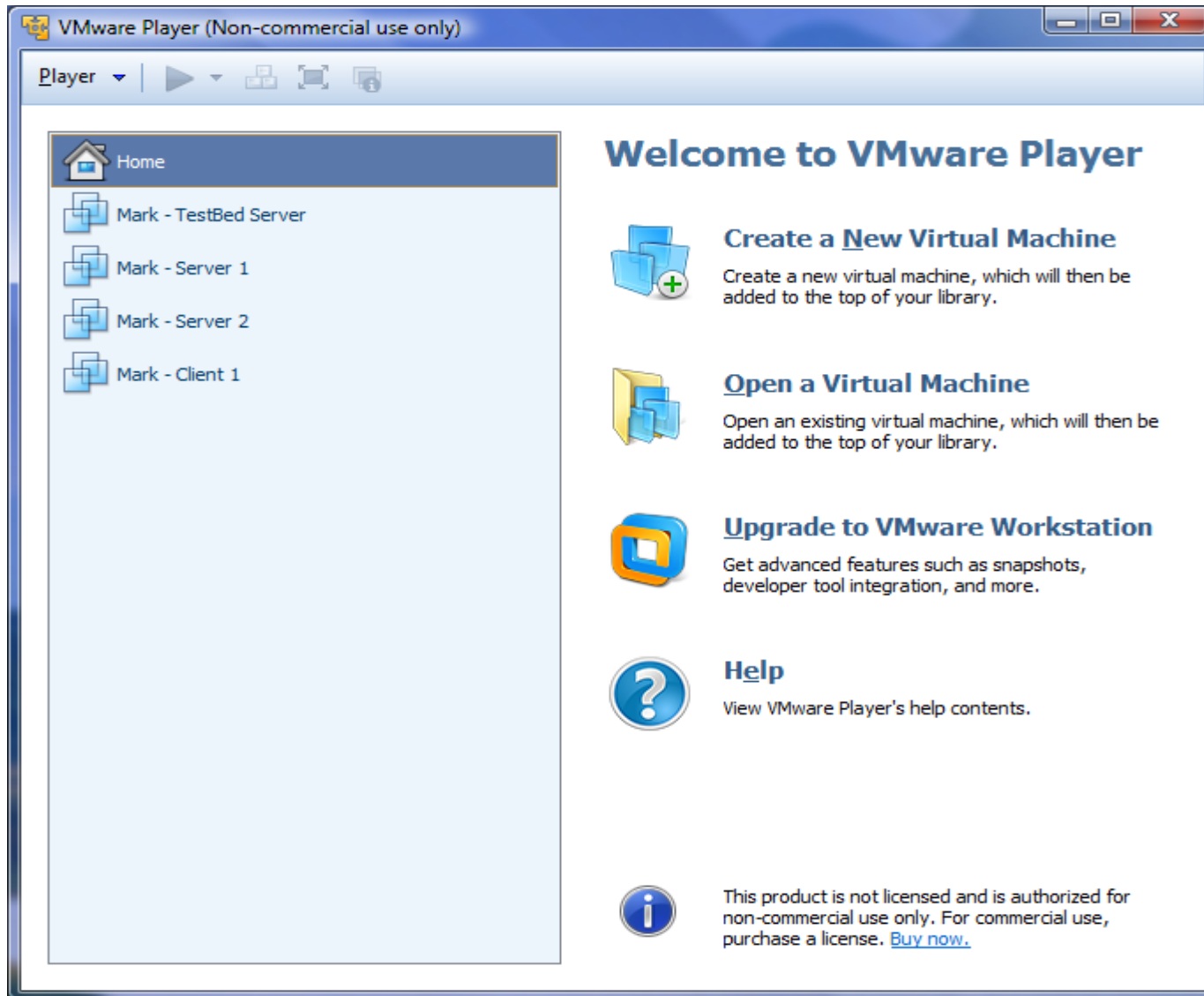
Installing and Configuring VMware Player



Initial VMware Player screen



Installing and Configuring VMware Player



Initial VMware Player screen with some VMs installed



Creating A Virtual Server Under VMware Player

- The following pages step you through installing the Windows Server 2008 Standard Edition from a CD/DVD `.iso` image. Installation from another image will proceed in much the same manner.
- To get the `.iso` image, go to DreamSpark and search for Microsoft Windows Server 2008 R2. You want the `.iso` image.





Home

- Mark - Server 1
- Mark - TestBed Server
- Mark - Server 2
- Mark - Client 1

Click To Create A New Virtual Machine

Welcome to VMware Player



Create a New Virtual Machine

Create a new virtual machine, which will then be added to the top of your library.



Open a Virtual Machine

Open an existing virtual machine, which will then be added to the top of your library.



Upgrade to VMware Workstation

Get advanced features such as snapshots, developer tool integration, and more.



Help

View VMware Player's help contents.



This product is not licensed and is authorized for non-commercial use only. For commercial use, purchase a license. [Buy now.](#)




Installing and Configuring VMware Player

New Virtual Machine Wizard ✕

Welcome to the New Virtual Machine Wizard
A virtual machine is like a physical computer; it needs an operating system. How will you install the guest operating system?


Install from:

Installer disc:

 DVD RW Drive (E:) ▼

Installer disc image file (iso):

C:\COURSES\CNT 4603 - System Administration\CNT 4603 - System Administration\ISO\Windows Server 2008\Windows Server 2008.iso ▼ Browse...

 Windows Server 2008 detected.
This operating system will use Easy Install. [\(What's this?\)](#)

I will install the operating system later.
The virtual machine will be created with a blank hard disk.

Help < Back Next > Cancel



Installing and Configuring VMware Player

New Virtual Machine Wizard

Name the Virtual Machine
What name would you like to use for this virtual machine?

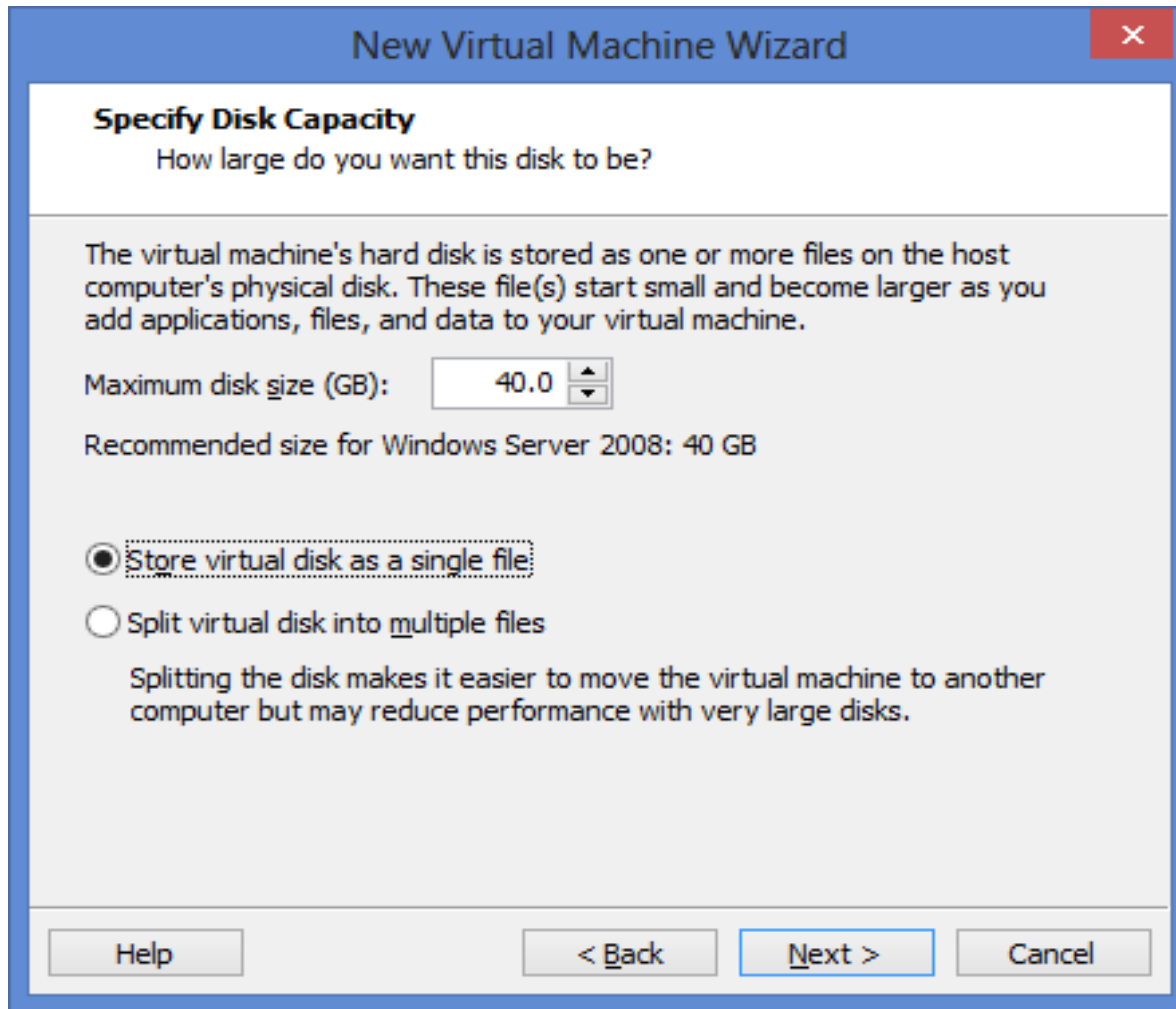
Virtual machine name:
Windows Server 2008 - Server T1

Location:
C:\Users\Mark Llewellyn\Documents\Virtual Machines\Windows S

< Back Next > Cancel



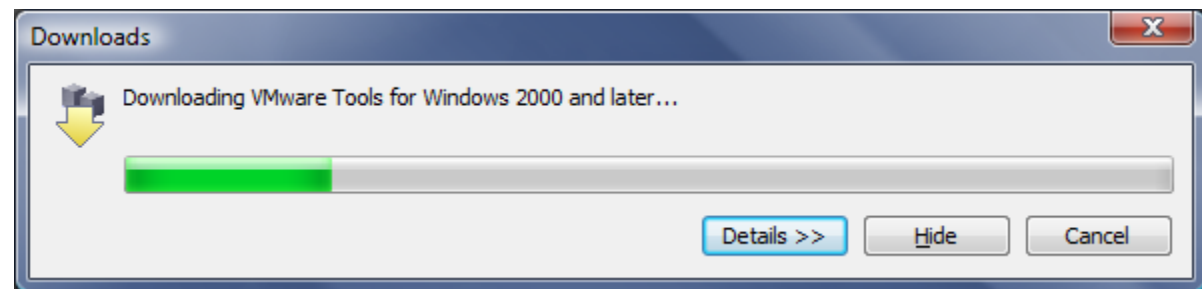
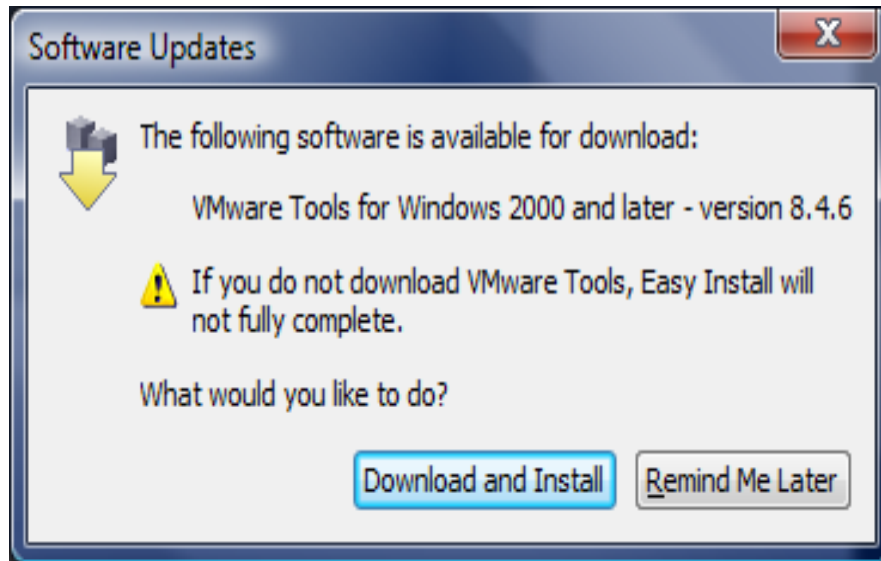
Installing and Configuring VMware Player



Installing and Configuring VMware Player



Installing and Configuring VMware Player



Windows Server 2008 - Server T1 - VMware Player (Non-commercial use only)

Player

Install Windows

Installing Windows...

That's all the information we need right now. Your computer will restart several times during installation.

- ✓ Copying files
- Expanding files (2%) .**
- Installing features
- Installing updates
- Completing installation

1 Collecting information 2 Installing Windows

Click in the virtual screen to send keystrokes Easy Install is installing Windows Server 2008. Change Disc Help



Initial Configuration Tasks



Perform the following tasks to initially configure this server

**1 Provide Computer Information**

Specifying computer information



Set time zone

Time Zone:

(GMT-05:00) Eastern Time (US Canada)



Configure networking

Network Adapters:

None detected



Provide computer name and domain

Full Computer Name:
Workgroup:WIN-TCC4WVDRK05
WORKGROUP**2 Update This Server**

Updating your Windows server



Enable automatic updating and feedback

Updates:
Feedback:Not configured
Windows Error Reporting off
Not participating in Customer Experience Improvement Program

Download and install updates

Checked for Updates:
Installed Updates:Never
Never**3 Customize This Server**

Customizing your server



Add roles

Roles:

Loading...



Add features

Features:

Loading...

 Do not show this window at logon

Close





Player ▾ | [Icons]



Server Manager



File Action View Help



Server Manager (WIN-TCC4WVDRK05)

- + Roles
- + Features
- + Diagnostics
- + Configuration
- + Storage

Server Manager (WIN-TCC4WVDRK05)



Get an overview of the status of this server, perform top management tasks, and add or remove server roles and features.

Server Summary

Server Summary Help

Computer Information

Full Computer Name: WIN-TCC4WVDRK05

Workgroup: WORKGROUP

Local Area Connection: IPv4 address assigned by DHCP, IPv6 enabled

Remote Desktop: Disabled

Product ID: 92577-082-2500446-76613

 Do not show me this console at logon

- Change System Properties
- View Network Connections
- Configure Remote Desktop

Security Information

Windows Firewall: On

Windows Updates: Not configured

Last checked for updates: Never

- Go to Windows Firewall
- Configure Updates
- Check for New Roles
- Run Security Configuration Wizard
- Configure IE ESC

 Last Refresh: 9/9/2013 2:55:11 PM [Configure refresh](#)

Start

Server Manager

[Icons] 2:55 PM



Server Manager

File Action View Help

[Navigation icons]

- Server Manager (MARK-SERVER1)
 - Roles
 - Features
 - Diagnostics
 - Configuration
 - Storage

Server Manager (MARK-SERVER1)

Get an overview of the status of this server, perform top management tasks, and add or remove server roles and features.

Configuration (ESC) On for Users

Roles Summary [Roles Summary Help](#)

Roles: 2 of 16 installed

- Active Directory Domain Services
- DNS Server

[Go to Roles](#)
[Add Roles](#)
[Remove Roles](#)

Features Summary [Features Summary Help](#)

Features: 3 of 35 installed

- Group Policy Management
- Remote Server Administration Tools
- Remote Administration Tools

Last Refresh: 9/17/2012 2:11:12 PM [Configure refresh](#)



Viewing Server Roles in Server 2008

- Before the next class you should do the following on the VM running Windows Server 2008 that you've installed in your virtual environment.
- Open the Server Manager (it should be on your taskbar; if not click Start then Server Manager).
- Scroll down and you'll come to the Roles Summary. Once the data has been collected by the server, you should see that there are 0 of 16 installed roles.
- Click Go to Roles.
- You should now see the screen shown on the next slide. Follow the remaining steps as illustrated.



Viewing Server Roles in Server 2008

Windows Server 2008 - Server T1 - VMware Player (Non-commercial use only)

Server Manager (WIN-TCC4WVDRK05)

Get an overview of the status of this server, perform top management tasks, and add or remove server roles and features.

Windows Firewall:	On
Windows Updates:	Not configured
Last checked for updates:	Never
Last installed updates:	Never
IE Enhanced Security Configuration (ESC):	On for Administrators On for Users

[Check for New Roles](#)
[Run Security Configuration Wizard](#)
[Configure IE ESC](#)

Roles Summary [Roles Summary Help](#)

Roles: 0 of 16 installed

[Go to Roles](#)
[Add Roles](#)
[Remove Roles](#)

Features Summary [Features Summary Help](#)

Features: 0 of 35 installed

[Add Features](#)
[Remove Features](#)

Last Refresh: 9/9/2013 2:56:02 PM [Configure refresh](#)

Click Add Roles

Viewing Server Roles in Server 2008

Add Roles Wizard

Before You Begin

This wizard helps you install roles on this server. You determine which roles to install based on the tasks you want this server to perform, such as sharing documents or hosting a Web site.

Before you continue, verify that:

- The Administrator account has a strong password
- Network settings, such as static IP addresses, are configured
- The latest security updates from Windows Update are installed

If you have to complete any of the preceding steps, cancel the wizard, complete the steps, and then run the wizard again.

To continue, click Next.

Skip this page by default

< Previous **Next >** Install Cancel

Read this page, but don't do any of the things mentioned on this page. Then click "Next"



Viewing Server Roles in Server 2008

Add Roles Wizard

Select Server Roles

Before You Begin

Server Roles

Confirmation

Progress

Results

Select one or more roles to install on this server.

Roles:

- Active Directory Certificate Services
- Active Directory Domain Services
- Active Directory Federation Services
- Active Directory Lightweight Directory Services
- Active Directory Rights Management Services
- Application Server
- DHCP Server
- DNS Server
- Fax Server
- File Services
- Network Policy and Access Services
- Print Services
- Terminal Services
- UDDI Services
- Web Server (IIS)
- Windows Deployment Services

Description:

[Active Directory Certificate Services \(AD CS\)](#) is used to create certification authorities and related role services that allow you to issue and manage certificates used in a variety of applications.

[More about server roles](#)

< Previous Next > Install Cancel

Select each of the 16 possible roles, and read the description that is provided for each of the possible server roles.



Viewing Server Roles in Server 2008

- Go back to the Server Manager window and this time scroll down until you come to the Features Summary (it will be right underneath the Roles Summary). Once the data has been collected by the server, you should see that there are 0 of 35 installed roles.
- Click Add Features.
- You should now see the screen shown on the next slide. Follow the remaining steps as illustrated.





Select Features

Features

Confirmation

Progress

Results

Select one or more features to install on this server.

Features:

- .NET Framework 3.0 Features
- BitLocker Drive Encryption
- BITS Server Extensions
- Connection Manager Administration Kit
- Desktop Experience
- Failover Clustering
- Group Policy Management
- Internet Printing Client
- Internet Storage Name Server
- LPR Port Monitor
- Message Queuing
- Multipath I/O
- Network Load Balancing
- Peer Name Resolution Protocol
- Quality Windows Audio Video Experience
- Remote Assistance
- Remote Differential Compression
- Remote Server Administration Tools
- Removable Storage Manager
- RPC over HTTP Proxy
- Simple TCP/IP Services
- SMTP Server

Description:

[Microsoft .NET Framework 3.0](#) combines the power of the .NET Framework 2.0 APIs with new technologies for building applications that offer appealing user interfaces, protect your customers' personal identity information, enable seamless and secure communication, and provide the ability to model a range of business processes.

[More about features](#)

You don't need to look at all of the features, but select a few and read the brief description of what the feature provides.

When you're done, click "Cancel" and shut down the VM.

< Previous

Next >

Install

Cancel

